

---

# USB OPOS Driver Installation and Test Utility Usage Guide 1.1

(Windows ONLY)

---

Author	Position	Company
Manuel Sastre Sañudo	Technical Support Analyst	APG Cash Drawer
Matthew Bailey	Technical Support Manager	APG Cash Drawer
Authorised by	Position	
Matthew Bailey	Technical Support Manager	APG Cash Drawer

For queries, please email: [matthew.bailey@eu.cashdrawer.com](mailto:matthew.bailey@eu.cashdrawer.com)





***Change control:***

Date	Author	Version	Change Reference
29 <sup>th</sup> September 2016	Manuel Sastre Sañudo	v1.1	Updated template applied.



***Index:***

Installation .....	1
If running a 64bit version of Windows .....	1
If running a 32bit version of Windows: .....	2
Test Utility Usage .....	3



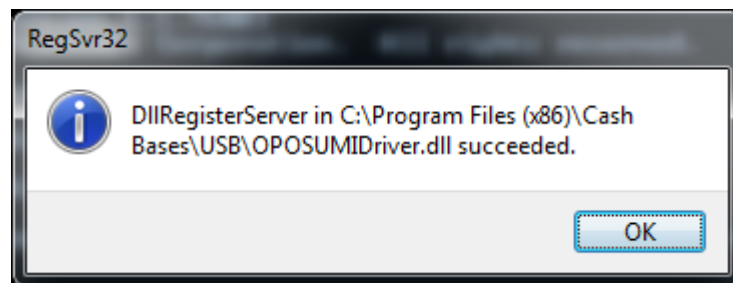
*This guide assumes that FTDI USB drivers have been pre-installed and that a cash drawer is connected*

## Installation

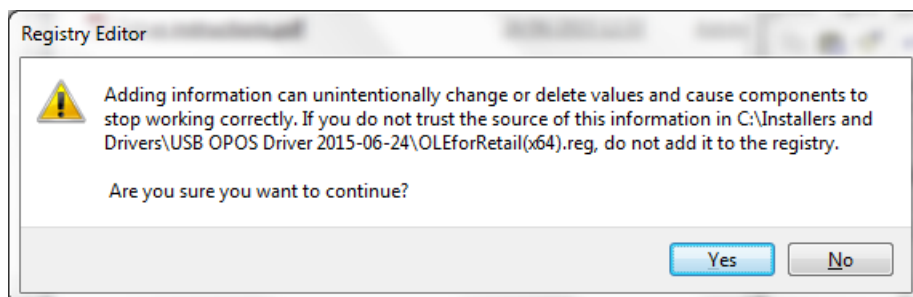
1. Run 'OPOS\_CCOs\_1.14.001.msi' with all of the default settings.
2. Run 'USB\_OPOSCashDrawerInstaller\_x.x.xx.msi', where x.x.xx is the version number, with all of the default settings.

### *If running a 64bit version of Windows*

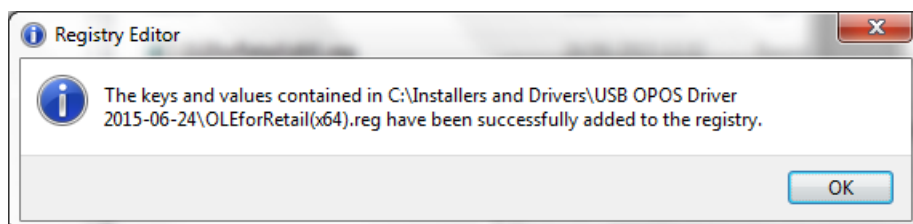
1. Run Command Prompt as Administrator.
2. Type: regsvr32 "C:\Program Files (x86)\Cash Bases\USB\OPOSUMIDriver.dll" then press Enter.
3. Wait for confirmation that the dll has been registered:



4. Run 'OLEforRetail(x64).reg'
5. Click 'Yes' when this message is displayed\*:



6. Wait for this message\*:

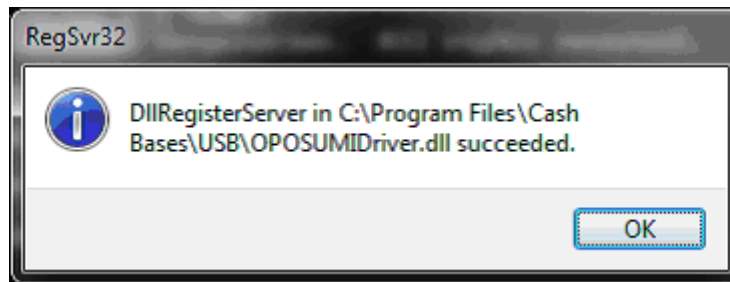


*\*The OLEforRetail file path displayed in message boxes is an example.*

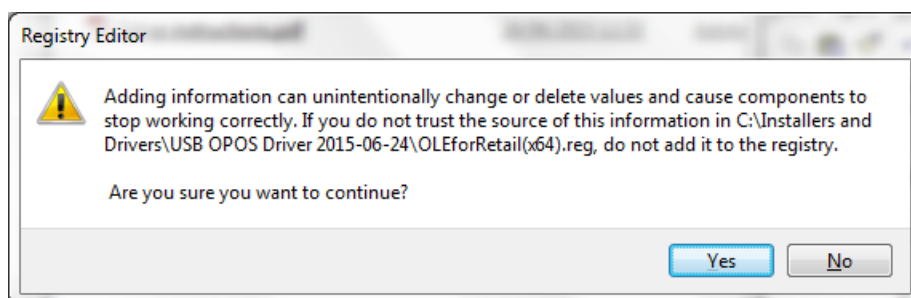


*If running a 32bit version of Windows*

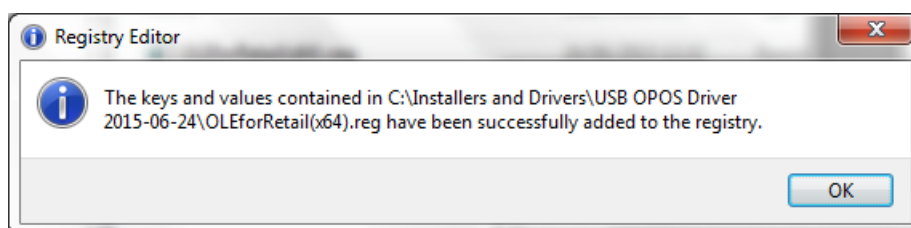
1. Run Command Prompt as Administrator.
2. Type: regsvr32 "C:\Program Files\Cash Bases\USB\OPOSUMIDriver.dll" then press Enter.
3. Wait for confirmation that the dll has been registered:



4. Run 'OLEforRetail(x86).reg'
5. Click 'Yes' when this message is displayed\*:



6. Wait for this message\*:

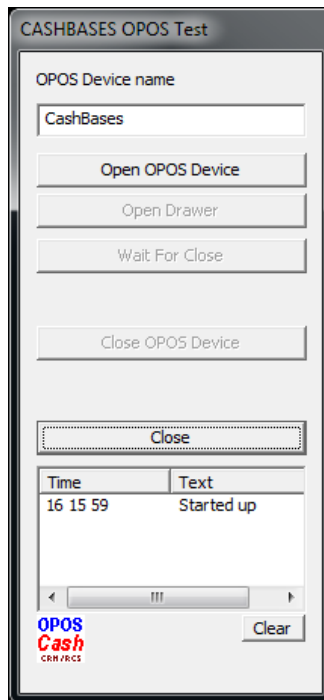


*\*The OLEforRetail file path displayed in message boxes is an example*

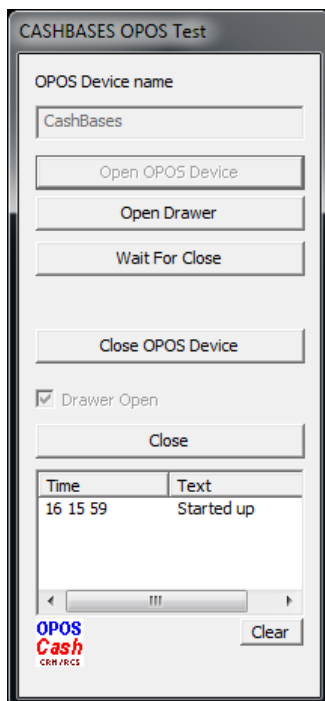


## Test Utility Usage

1. Click Start > All Programs > Cash Bases > Cash Bases USB OPOS Test
2. Wait for the application to launch:



3. Click 'Open OPOS Device' to open a connection to your cash drawer.
4. Wait for function buttons to become enabled:



- 'Open Drawer' will fire open your cash drawer.
- 'Wait For Close' can be clicked when your drawer is in the open position to lock the application until the drawer is closed.
- 'Close OPOS Device' will close connection to your cash drawer.
- '☒ Drawer Open' reports drawer status; open= ☒ / closed= ☐
- 'Close' closes the application.
- 'Clear' clears the startup display.