



CASH MANAGEMENT

SMARTtill Solution®

416 ST2 Slide Out SMARTtill Solution®

Achieve Simplified Cash Handling

Cash Management Solution

The **SMARTtill** Solution® is a new revolution in cash management, enabling retailers to reduce cash losses, reduce the cost of cash handling, and improve in-store productivity. The **SMARTtill** Solution® is an innovative cash management system suitable wherever cash is transacted.

The **SMARTtill** Intelligent Cash Drawer captures, in real-time, all cash activity at its location and reconciles to sales made. This information is collected without affecting transaction time or interrupting the retail transaction. The **SMARTtill** Solution® can be integrated with your PoS hardware/ PoS application.

The data from the **SMARTtill** Units can be populated into any suitable database and used to support intelligent cash management to enable real-time cash visibility at the PoS. This can be via new or existing back office systems. Examples of the type of information for each **SMARTtill** Unit, includes; current cash float value; change levels compared to an optimum level; change top up requirements; value of change added; various alerts for cash lifts; cash errors; and discrepancy data by transaction, shift, cashier, time and date.



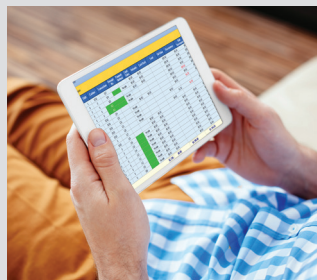
Operations

- Eradicate manual cash till counts and reduce cash loss investigation time
- Redeploy labour for an improved shopping experience



Loss Prevention

- Full cash transaction audit trail
- Ability to integrate CCTV to pinpoint discrepancies
- Reduce cash losses by up to 90%



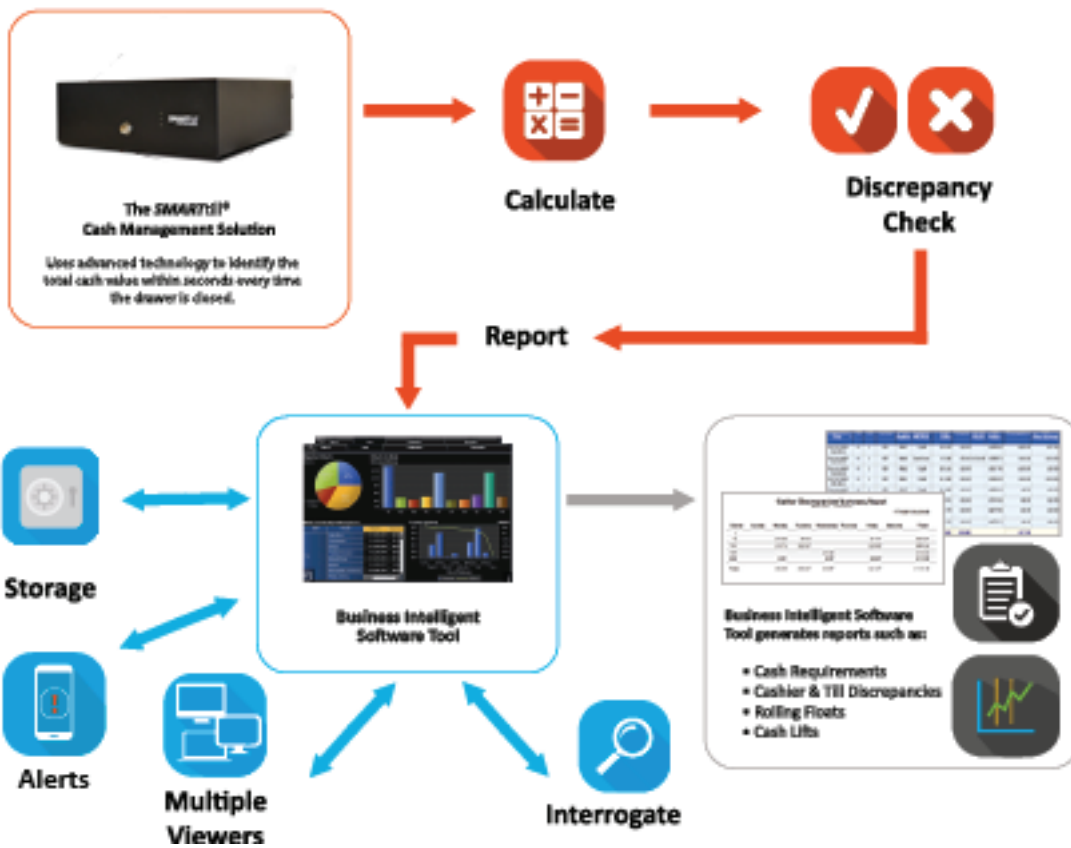
Data Analytics

- Security alerts on cash transaction errors, lifts, top ups, and CIT pick ups
- Predictive analytics; cashier, lane and store performance data



Treasury

- Reduce cash in transit (CIT) fees
- Reinvest your 'dead' cash



416 ST2 Slide Out Intelligent Cash Drawer Features

Model Size

416mm (W) x 422mm (D) x 136 mm (H)
16.4" (W) x 16.6" (D) x 5.35" (H)

Construction/ Colour

- Robust steel construction available in a wide range of colours

Life Cycle

Tested to a minimum of one million operations

Insert Aspects

- 6 weighable note compartments
- 8 weighable + removable coin cups
- Configurable to Euro and Sterling currencies
- Load bearing sensors beneath each coin and note compartment
- Maximum coin float value: £400.00 / €465.00
- Maximum number of notes in each compartment: 186

Interfaces

- Standard cash drawer kick out
- RS232, USB and TCP/IP Communication port

POS Software Interfaces

- Direct command protocol
- XML file protocol
- Windows JavaPOS and OCX drivers are available when serially configured
- Linux XML Interface is available for Linux distributions (OpenSUSE, Ubuntu and Fedora) when serially configured

Power Requirements

- 12V - 40V DC at 6 Watts (*Dynamic Automatic Voltage*)
- Optional Power Over Ethernet (class 4 - 48vdc)

Security

High Security RPT Lock - manual override (*Random or alike*)

Fixing

Secured with bolts from underneath the counter



Contact Us



APG Cash Management Solutions
Unit 4, The Drive
Newhaven, East Sussex
BN9 0LA, UK



+44 (0) 1273 616 300



sales@eu.apgcashmanagement.com