



SMARTtill[®]

by APG CASH DRAWER

Achieve Simplified Cash Handling

The SMARTtill Cash Management Solution

The **SMARTtill** Solution[®] is a new revolution in cash management, enabling retailers to reduce cash losses, reduce the cost of cash handling, and improve in-store productivity. The **SMARTtill** Solution[®] is an innovative cash management system suitable wherever cash is transacted.

The **SMARTtill** Intelligent Cash Drawer captures, in real-time, all cash activity at its location and reconciles to sales made. This information is collected without affecting transaction time or interrupting the retail transaction. The **SMARTtill** Solution[®] can be integrated with your PoS hardware/PoS application.

The data from the **SMARTtill** Units can be populated into any suitable database and used to support intelligent cash management to enable real-time cash visibility at the PoS. This can be via new or existing back office systems. Examples of the type of information for each **SMARTtill** Unit, includes; current cash float value; change levels compared to an optimum level; change top up requirements; value of change added; various alerts for cash lifts; cash errors; and discrepancy data by transaction, shift, cashier, time and date.



Four Key Areas of Impact



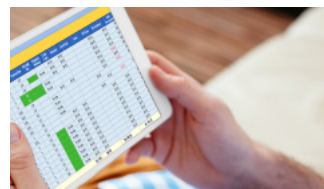
Operations

- Eradicate manual cash till counts and reduce cash loss investigation time
- Redeploy labour for an improved shopping experience



Loss Prevention

- Reduce cash losses by up to 90%
- Full cash transaction audit trail
- Ability to integrate CCTV to pinpoint discrepancies



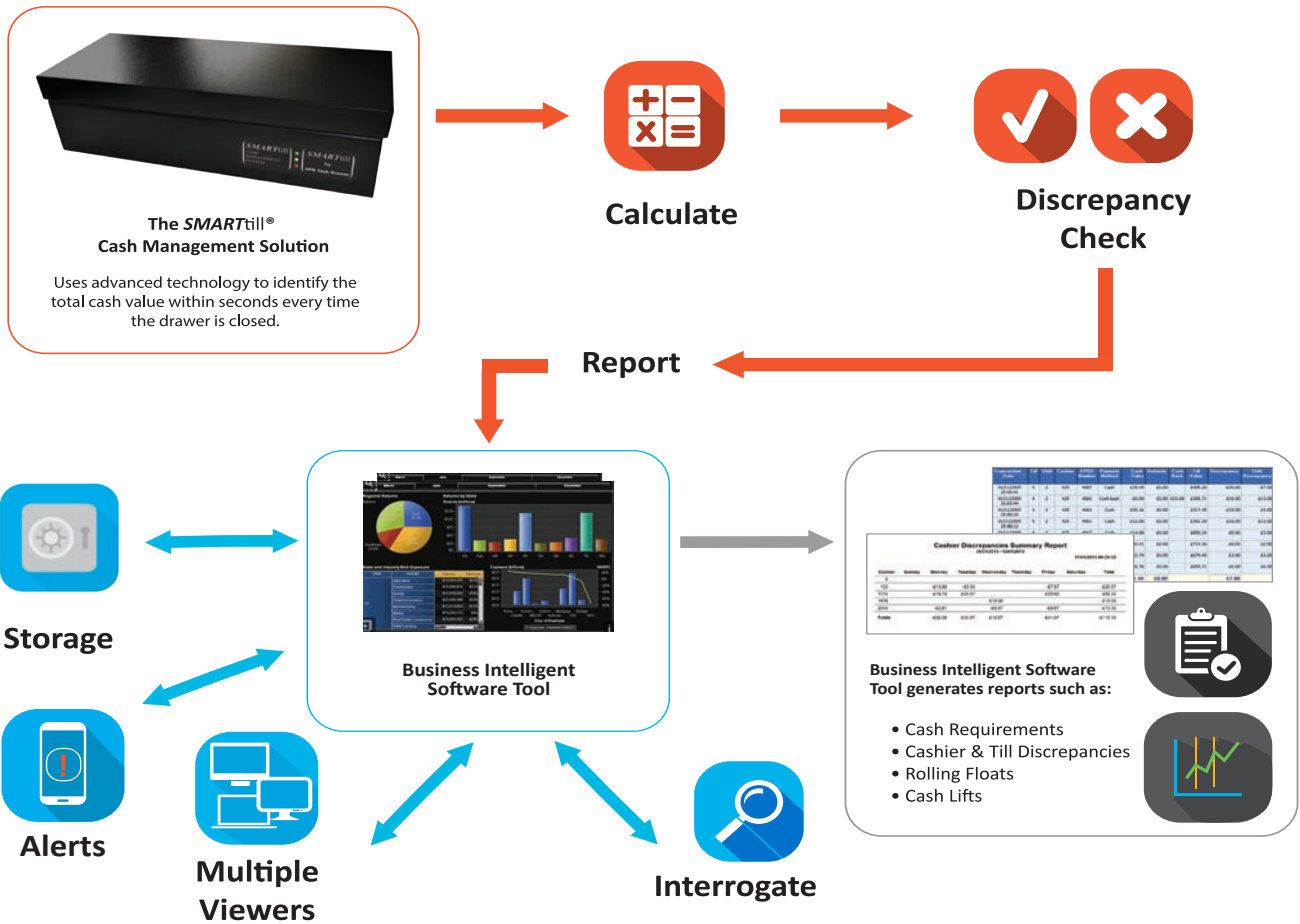
Data Analytics

- Security alerts on cash transaction errors, lifts, top ups, and CIT pick ups
- Predictive analytics; cashier, lane and store performance data



Treasury

- Reduce cash in transit (CIT) fees
- Reinvest your 'dead' cash



460 ST2 Flip Lid Intelligent Cash Drawer Features

- | | |
|--|--|
| <p>Size:</p> <ul style="list-style-type: none"> • 460W x 197D x 139H mm with baseplate • 18.2W x 7.75H x 5.47D inches with baseplate <p>Construction/ Colour:</p> <ul style="list-style-type: none"> • Robust steel construction available in a wide range of colours including stainless steel lid <p>Life Cycle:</p> <ul style="list-style-type: none"> • Tested to a minimum of one million operations <p>Power requirement:</p> <ul style="list-style-type: none"> • 12V - 40V DC at 6 Watts (Dynamic Automatic Voltage) • Optional Power Over Ethernet (class 4 - 48vdc) <p>Interfaces:</p> <ul style="list-style-type: none"> • Standard cash drawer kick out • RS232, USB and TCP/IP Communication port • Ferrite filtered Ethernet cable should be used when TCP/IP protocol is used | <p>POS Software Interface:</p> <ul style="list-style-type: none"> • Direct command protocol • XML file protocol • Windows JavaPOS and OCX drivers are available when serially configured <p>Insert Aspect:</p> <ul style="list-style-type: none"> • 6 weighable note compartments • 8 weighable & removable coin cups • Configurable to Euro & Sterling currencies • Load bearing sensors beneath each coin and note compartment • Maximum coin float value: £400 • Maximum number of notes in each compartment: circa 100 <p>Security:</p> <ul style="list-style-type: none"> • Optional hasp/deadlock with random or alike keys <p>Fixing:</p> <ul style="list-style-type: none"> • With Top down fixing baseplate (includes 4 mm thick foam) |
|--|--|



Optional hasp/deadlock



The SMARTtill Intelligent Cash Drawer locks into the baseplate



The quick release latch enables easy removal of the SMARTtill Intelligent Cash Drawer from the baseplate